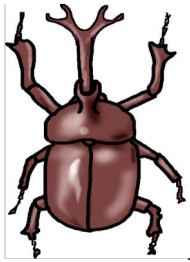
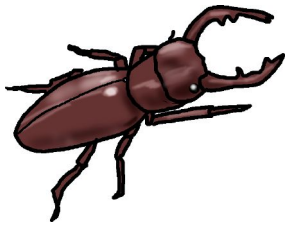


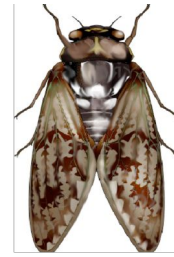
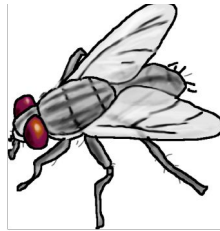
小学校受験によくでてくる虫（虫とその仲間）



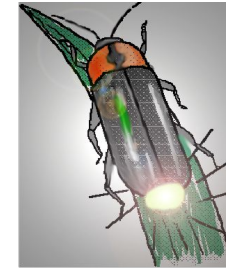
夏



夏



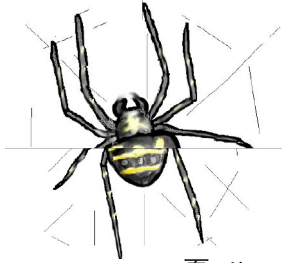
夏



夏



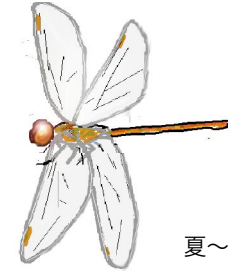
春



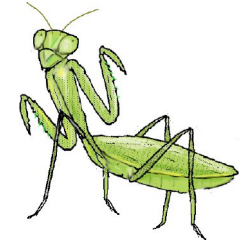
夏 秋



春～夏



夏～秋



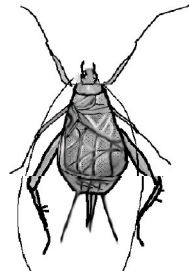
夏



春



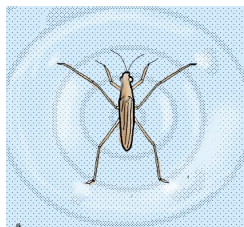
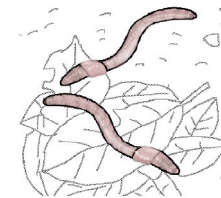
夏



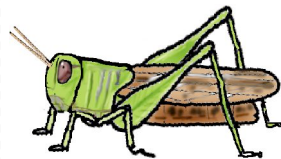
秋



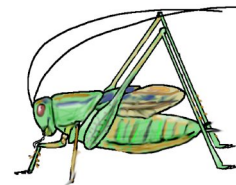
秋



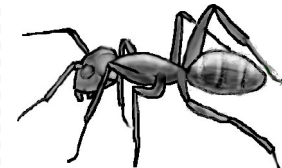
夏



夏 秋



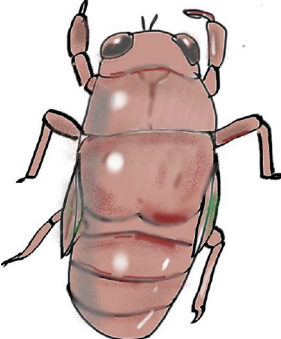
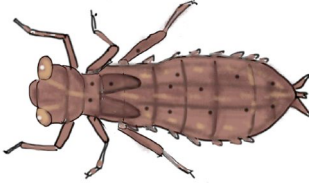




秋



かぶとむし・くわがたむし・はえ・せみ・ほたる・ごきぶり
みつばち・くも・みのむし・てんとうむし・とんぼ・かまきり

もんしろちょう・あげはちょう・すずむし・こおるご・みみず・かたつむり
なめくじ・あめんぼ・ぱった・きりぎりす・あり・だんごむし

カブトムシの幼虫・アゲハチョウの幼虫・セミの幼虫・トンボの幼虫（やぶ）・モンシロチョウの幼虫（あおむし）・テントウムシの幼虫